



CANCER PREVENTION AND

**CPRIT**

RESEARCH INSTITUTE OF TEXAS

**TEXAS TAKES ON CANCER**

# CANCER IN TEXAS

- ★ \_\_\_\_\_ cause of death
- ★ Almost \_\_\_\_\_ new cancer cases
- ★ \_\_\_\_\_ Texans already diagnosed with cancer will die
- ★ Will cost Texans \_\_\_\_\_.
- ★ Leading cause of death for Texas women between the ages of \_\_\_\_\_.
- ★ One out of every \_\_\_\_\_ Texas men will be diagnosed with cancer in his lifetime

# CANCER IN TEXAS

- ★ Second leading cause of death
- ★ Almost 98,000 new cancer cases a year
- ★ 37,000 Texans diagnosed with cancer die each year
- ★ Costs Texans \$22 billion annually
- ★ Leading cause of death for Texas women between the ages of 35 and 74
- ★ One out of every two Texas men will be diagnosed with cancer in his lifetime

# TEXAS' REACTION

*“IF YOU FIND YOURSELF IN A HOLE THE FIRST THING TO DO IS TO STOP DIGGIN’”*



# TEXAS' RESPONSE

## ESTABLISHED THE CANCER PREVENTION AND RESEARCH INSTITUTE OF TEXAS

- ★ Research and Prevention
- ★ Expand Research Capabilities
- ★ High-quality New Jobs
- ★ *Texas Cancer Plan*

# CONSTITUTIONAL AMENDMENT AND ENABLING LEGISLATION

- ★ \$3 billion of bonds over 10 years for cancer grants
- ★ Funding for prevention
- ★ Requires matching funds
- ★ Limits indirect expenses
- ★ Places ceiling on facility construction



# URGENT THREATS AND URGENT REALITIES

## ***Urgent Threat***

*H1N1 Swine Flu*

*154,000 cases thru Oct. 11, 2009 in the Americas*

*3,400 deaths or 18 each day*

## ***Urgent Reality***

*Cancer in Texas same time period*

*49,000 cases this year in Texas alone*

*18,500 deaths or 103 each day*

# CPRIT OVERSIGHT COMMITTEE



James Mansour



Dr. Malcolm Gillis



Dee Kelly



Dr. Joseph Bailes



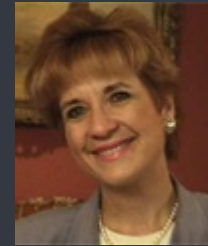
Scott Sanders



Lionel Sosa



Charles Tate



Cindy Brinker Simmons



Faith Simmons Johnson



Susan Combs



Greg Abbott



TEXAS TAKES ON  
CANCER

# WHAT DO THEY BRING TO THE TABLE?



# WHAT THEY BRING TO CPRIT

Pragmatism

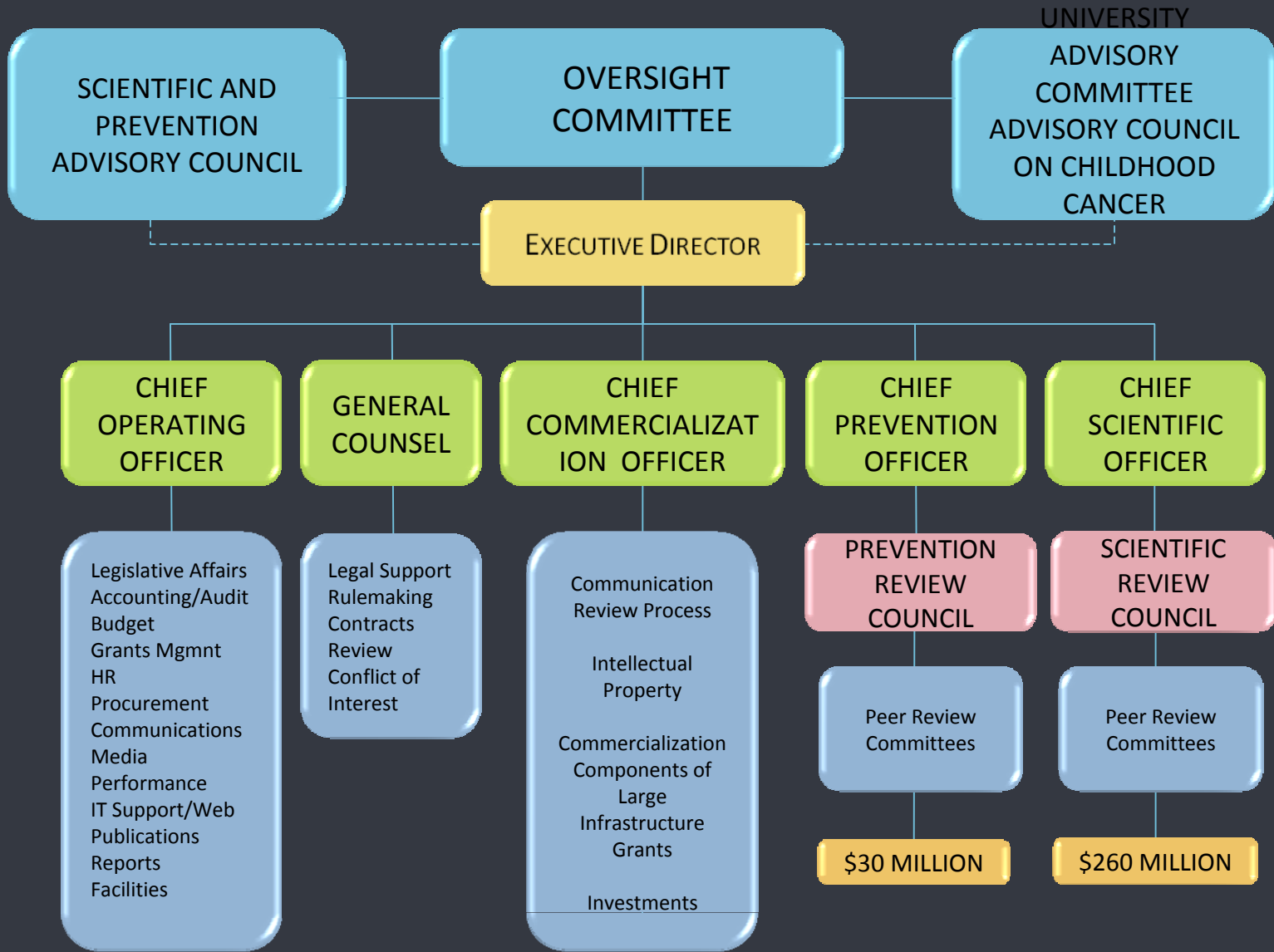
Persistence

Performance

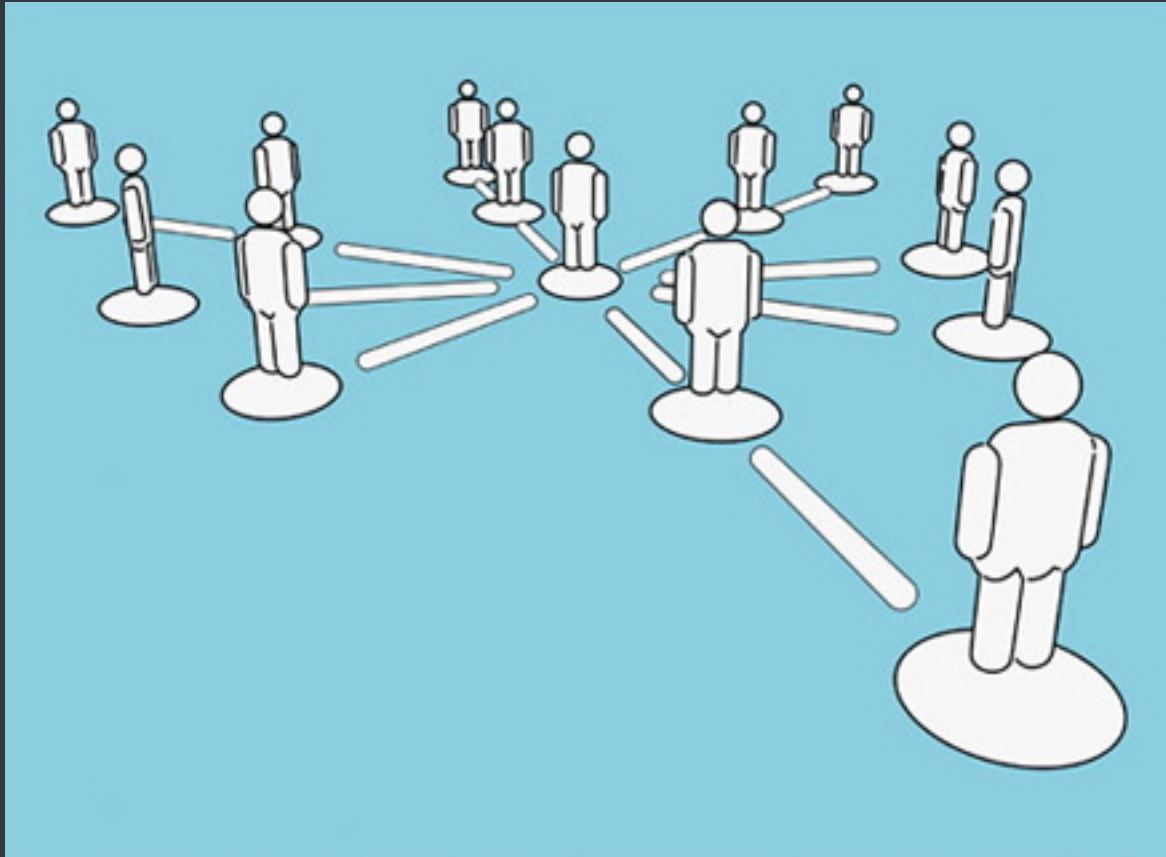
Public Service

Passion

# CPRIT OPERATING STRUCTURE



# CPRIT NETWORK



# ORGANIZATIONAL FOCUS

- ★ DREAM TEAM
- ★ SMALL IN NUMBERS
- ★ NIMBLE IN OPERATION
- ★ ENTREPRENEURIAL IN SPIRIT
- ★ NON SILO'ED IN THINKING
- ★ TRANSPARENT IN ACTIONS
- ★ VISIONARY IN STRATEGY
- ★ GAMECHANGING IN PRODUCT

# CPRIT HAS MODEL LEGISLATION



- ❖ Conflict of interest guidelines
- ❖ Peer review process
- ❖ Honoraria to the review committees
- ❖ Indirect costs definition
- ❖ Terms for the Oversight Committee
- ❖ University Advisory Committee

# LEGISLATIVE FUNDING PRIORITIES

IN MAKING RECOMMENDATIONS TO THE OVERSIGHT  
COMMITTEE, THE INSTITUTE SHALL GIVE PRIORITY TO  
PROPOSALS THAT:

Breakthroughs

Fundamental science

Comprehensive, Coordinated

Interdisciplinary, Inter-institutional

Other Sponsors' Priorities

# LEGISLATIVE FUNDING PRIORITIES

(CONT.)

Match

Collaborative

Economic Development

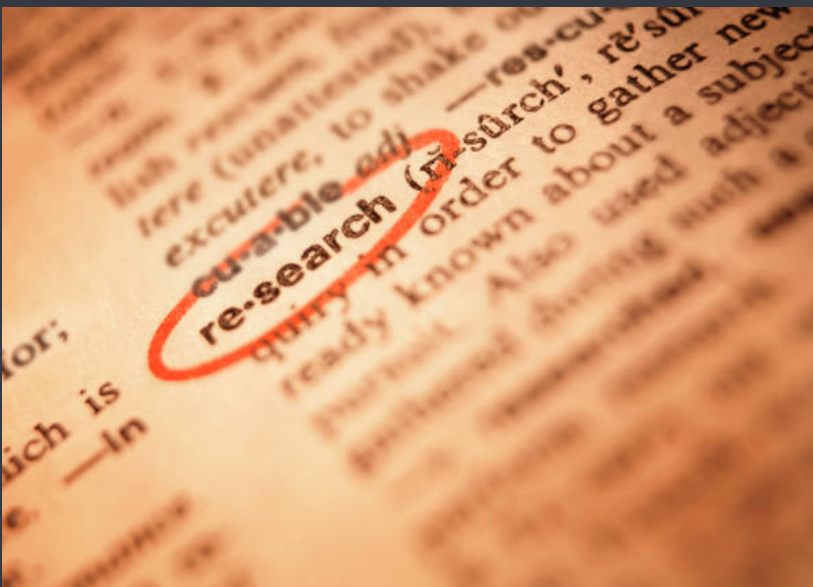
Enhance Research

Innovation, Commercialization

High-quality Jobs

Research Capabilities

# BOTH RESEARCH AND PREVENTION GRANTS



# CANCER RESEARCH GRANTS

## \$195 MILLION PER YEAR

- ★ Leverage funds for Texas
- ★ Cause and prevention of cancer
- ★ Detection and treatment of cancer
- ★ Laboratory research, translational studies, clinical and epidemiological investigations
- ★ Recruitment of talented researchers/Training new investigators
- ★ Support research infrastructure /Promote commercialization

# CANCER PREVENTION GRANTS

## \$22 MILLION PER YEAR

- ★ Leverage funds for Texas
- ★ Texas one of the leading states for cancer prevention funding
- ★ A diversified, coordinated and aggressive Prevention Plan
- ★ Immediate impact in preventing cancer – and saving lives
- ★ Cancer inform decisions
- ★ Will focus on:
  - ★ Health promotion, education and awareness programs
  - ★ Delivery of evidence based screening and survivorship services
    - ★ Data collection for cancer surveillance

# TYPES OF APPLICATIONS (RFAS)

## RESEARCH

1. High Impact/High Risk - closed
2. Individual Investigator -closed
3. Multiple Investigators including collaborative projects
4. Recruitment
5. Training
6. Company-focused RFA

## PREVENTION

1. Health Promotion, Education and Outreach
2. Evidence based prevention programs & services
3. Health Care Provider Education
4. Innovation awards
5. Collaboration grants
6. Data Collection/infrastructure

# HOW WILL THE BEST GRANTS BE SELECTED?



# FUNDING PRINCIPLES

- ★ Invest in the Best
- ★ Focus on Innovation, Importance, Impact
- ★ Encourage risk – Share risk
- ★ Fund spectrum of health: bench to patient and beyond
- ★ Fundamental discoveries that get into practice
- ★ Recruit talent to – and train talent in Texas
- ★ Stewards of the Public Trust

# PREVENTION PROGRAM OUTCOMES

- ★ Reduce mortality
- ★ Reduce incidence
- ★ Improve quality of life
- ★ Demonstrate impact in two years

# RIGOROUS PEER REVIEW



# GRANT PEER REVIEW GROUPS

## RESEARCH

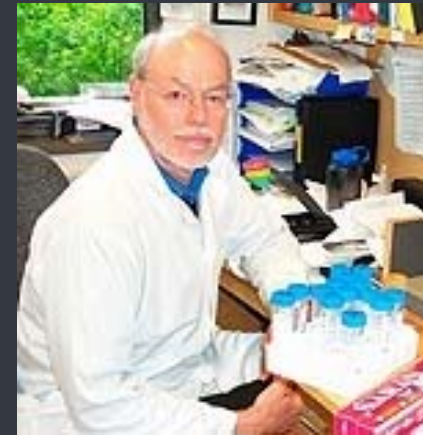
- ★ 3 basic science review group committees
- ★ 3 translational and clinical science review groups
- ★ 1 interfaces review group: chemistry, physics, and engineering

## PREVENTION

- ★ Prevention Information and Services
- ★ Early Detection and Treatment
- ★ Professional Education and Practice
- ★ Cancer Data Acquisition and Utilization
- ★ Survivorship

# Scientific Review Council Chair

Phillip A. Sharp, Ph.D.



- ★ Professor –Koch Institute for Integrative Cancer Research at MIT
- ★ Former Director – Koch Institute
- ★ Nobel Laureate, 1993; “split genes”
- ★ Co-Founder of Biogen

# RESEARCH PEER REVIEW COMMITTEE CHAIRS

- ★ Tyler Jacks, Ph.D. – Koch Institute for Integrated Cancer Research at MIT
- ★ David Johnson, M.D. – Vanderbilt-Ingram Cancer Center
- ★ Bill Kaelin, Jr., M.D. – Dana-Farber Cancer Institute
- ★ Sam Gambhir, M.D., Ph.D. – Stanford University
- ★ Clara Bloomfield, M.D. – Ohio State University Comprehensive Cancer Ctr.
- ★ Charles J. Sherr, MD, Ph.D. – St. Jude Children's Research Hospital
- ★ Richard D. Kolodner, Ph.D. – Ludwig Institute for Cancer Research, UCSD

# WHAT IS THE SCHEDULE FOR THIS YEAR?



# ESTIMATED TIME LINES

Aug –Oct. 2009	Recruit Scientific/Prevention Review Councils
Aug-Sept 2009	Write rules/guidance/release RFAs
Oct/Nov 2009	<b>Receive smaller, less complex proposals</b>
Feb/Mar 2010	Fund smaller, less complex grants
Feb/Mar 2010	Receive larger, more complex proposals & training grant proposals
May –July 2010	Fund larger, more complex grants & training grant proposals
Sept 2010/Feb 2011	Two annual cycles
Anytime	Recruitment applications

# WHAT'S THE PLAN FOR COMMERCIALIZATION?



# COMMERCIALIZATION GOALS

- ★ Encourage Brilliant Ideas for Breakthroughs
- ★ Manage Intellectual Property
- ★ Bring the benefits to Texas
- ★ Issue a company-focused RFA
- ★ Market Innovative Valuable Products:
  - ★ Devices for Prevention and Diagnosis
  - ★ Vaccines and Drugs to Prevent, Treat or Cure

# SPECIAL REQUIREMENTS

## INTELLECTUAL PROPERTY

The oversight committee shall establish standards that require **all grant awards to be subject to an intellectual property agreement** that allows the state to collect royalties, income, and other benefits realized as a result of projects undertaken with money awarded under Subchapter E.

## ETHICS STANDARDS

The oversight committee **shall adopt conflict-of-interest rules**, based on standards applicable to members of the National Institutes of Health scientific review committees, to govern oversight committee members.

# MATCH

- ★ Texas law requires recipient to match one-half of the CPRIT grant amount
- ★ Proposed rule sets guidelines for meeting match requirement
- ★ Measured by subject area and institution
- ★ Some expenditures by recipient on unrecovered indirect costs counts toward match

# CPRIT STATUS REPORT



# PROGRESS TO DATE

“Listen and Learn” Sessions

Research and Prevention Webinars

Chief Scientific Officer      Chief Prevention Officer

Key Staff

Staffing Doubles

Now 16

Legislation a Model

FY 2010/2011 funding secured – \$450 million

# PROGRESS TO DATE

Scientific and Prevention Advisory Council

Economic Development and Commercialization Committee

Sale of Bonds

Exploring Funding Sources to Leverage Reach

Engaging Texas Cancer Registry

Peer Review Process

Grants Management Process

Grant Award Rules Published

# PROGRESS TO DATE

7 RFAs Announced

University Advisory Committee

Advisory Council on Childhood Cancer

Prevention Plan

Commercialization Strategy

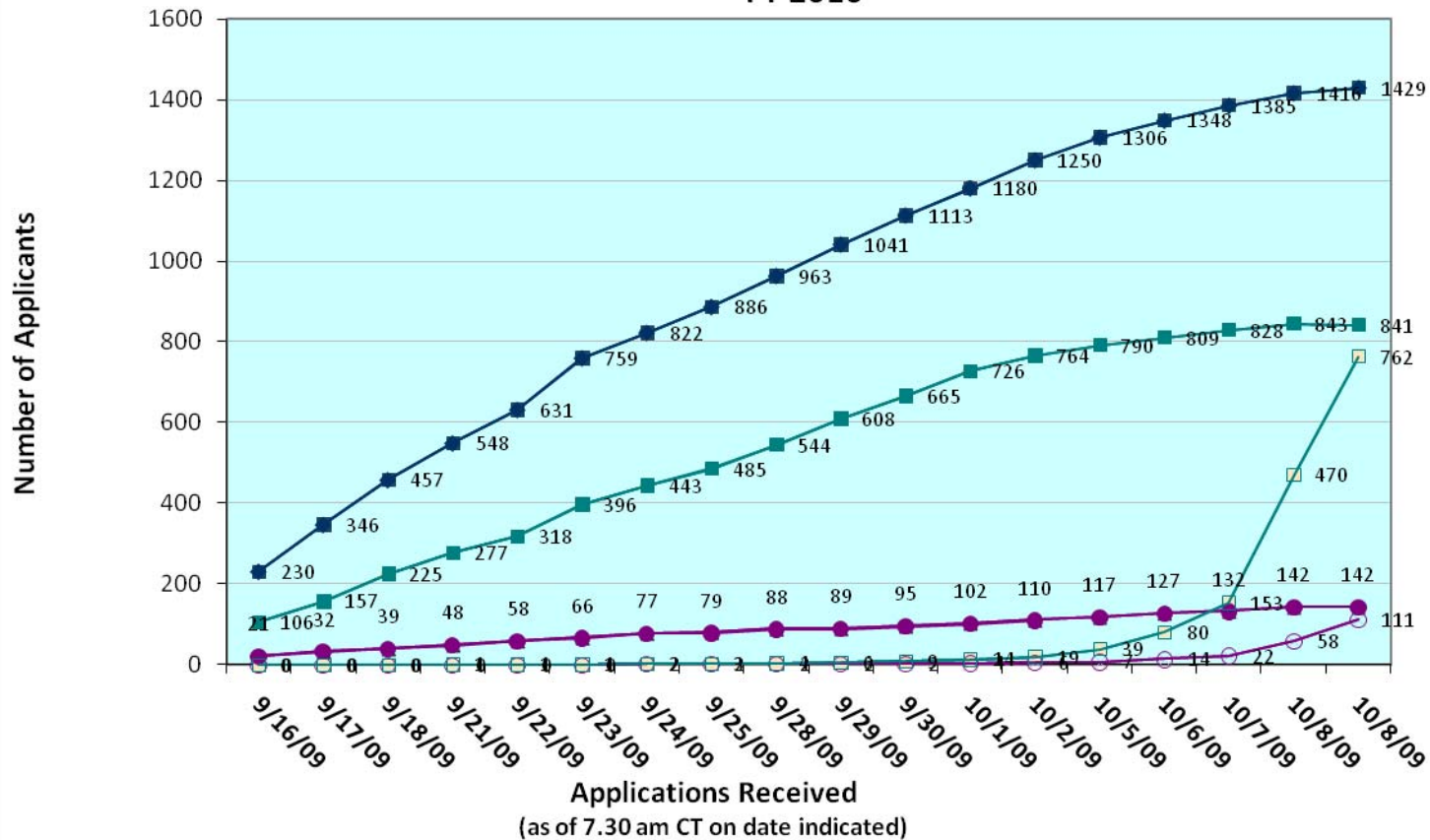
Online Grant System Accepting Applications

Big Idea Meeting

Annual Scientific/Prevention Meeting to be Held in 2010

# RESEARCH APPLICATIONS AS OF OCT. 8TH

CPRIT Application Receipt System  
FY 2010



# PREVENTION RFAS

## OPEN UNTIL NOV. 13TH

- ★ Evidence Based Prevention Programs & Services
  - Focus on Breast, Cervical, Colorectal screening and survivorship services
  - Up to \$1M total/up to 24 months
  
- ★ Health Promotion, Public Education, Outreach
  - Focus on innovative, culturally appropriate, with measureable outcomes
  - Up to \$300K total/up to 24 months

# BIG IDEAS - MAJOR COLLABORATIVES

- ★ Clinical Trials Network
- ★ BioRepository
- ★ Drug Discovery and Development Platform
- ★ Imaging consortium

# CPRIT ANNUAL MEETING

- ★ Yearly
- ★ Describe, discuss, plan research and prevention efforts
- ★ Major speakers from Texas and beyond
- ★ Plenary, concurrent and poster sessions
- ★ Rotate site around state
- ★ First Meeting: October 2010 in Austin

# HOW WILL WE MEASURE SUCCESS

Lives Saved – Cancer Prevented

Revenue Flow to Texas

Jobs Created in Texas

# DO IT TODAY



For more information on the different ways  
you can be tested, call 1.800.227.2345  
or visit [www.cancer.org/NYNJ](http://www.cancer.org/NYNJ).

# QUESTIONS?

