

ST. LUKE'S®
EPISCOPAL
HEALTH
CHARITIES



Closing the Gap:
Capacity and Incident Data Analysis
Linda Highfield, PhD
Manager, Community Health Information System (CHIS)

The Charities Mission

As an expression of the healing ministry of the St. Luke's Episcopal Health System and in partnership with the community, the Charities increases opportunities for **health promotion** and **disease prevention**, especially among the underserved, making possible **systemic change** and **measurable improvement** in overall **community health status** and **individual well being**.



Health Disparities

- Observed disparity in incidence and mortality in Breast Cancer
 - Highest incidence in Caucasian women
 - Highest mortality in African American women
- Disparities in access to care
 - Higher rates of uninsured Hispanic and African American women compared to Caucasian women



Breast Health Mapping Project

April 2005 the Collaborative conceptualized the Breast Health Mapping Project

- An interactive Web-based breast health resource for the Houston CMSA
- Contains more than 140 providers
- Improving access, particularly for low income and uninsured clients



Breast Health Portal



ST. LUKE'S®

Episcopal Health Charities

[About Us](#) | [Support Our Work](#) | [News](#)

[Grants](#)

[Toolkit](#)

[Health Information](#)

[Neighborhood Initiatives](#)

[Community Initiatives](#)

[Research](#)



Breast Health Collaborative of Texas Locate Clinics and Services

Instructions: You can search for clinics and services using the select boxes below. You can search by just one category (such as zip code, or services) or you can search using several categories (like zip code AND services AND language). You can also choose more than one option within a select box. For example, you can search for results in several zip codes. To select more than one option, hold down the **'ctrl' key** on your keyboard when clicking on the options desired. To eliminate any options selected including **"Select All"**, hold down the **'ctrl' key** on your keyboard and click on the option to be removed.

The list of cities and counties include only those places where an organization is actually located. **"Area Served"** means that the organization serves people who live in that county, but may not be located in that county.

Please Note: Once you have received a list of providers on the **"Search Results" Page**, there is a **"New Search" Button** provided on the top right of the page for use if you choose to start your search over with default options and then make different selections.

[▶ En Español](#)

[▶ Back to Community Health Information System](#)

Breast Health Collaborative of Texas

[Breast Health Portal](#)

[▶ Locate Clinics and Services](#)

[Other Resources](#)

[Researchers - Interactive Mapping](#)

[Terminology Glossary](#)

[Project Safety Net](#)

Search:

Service Location:
Zip Code:

Select All...
77002
77003
77004
77005
77006
77007
77008

City:

Select All...
Anahuac
Angleton
Baytown
Beaumont
Bellaire
Conroe
Galveston

County:

Select All...
Brazoria
Chambers
Fort Bend
Galveston
Harris
Jefferson
Montgomery

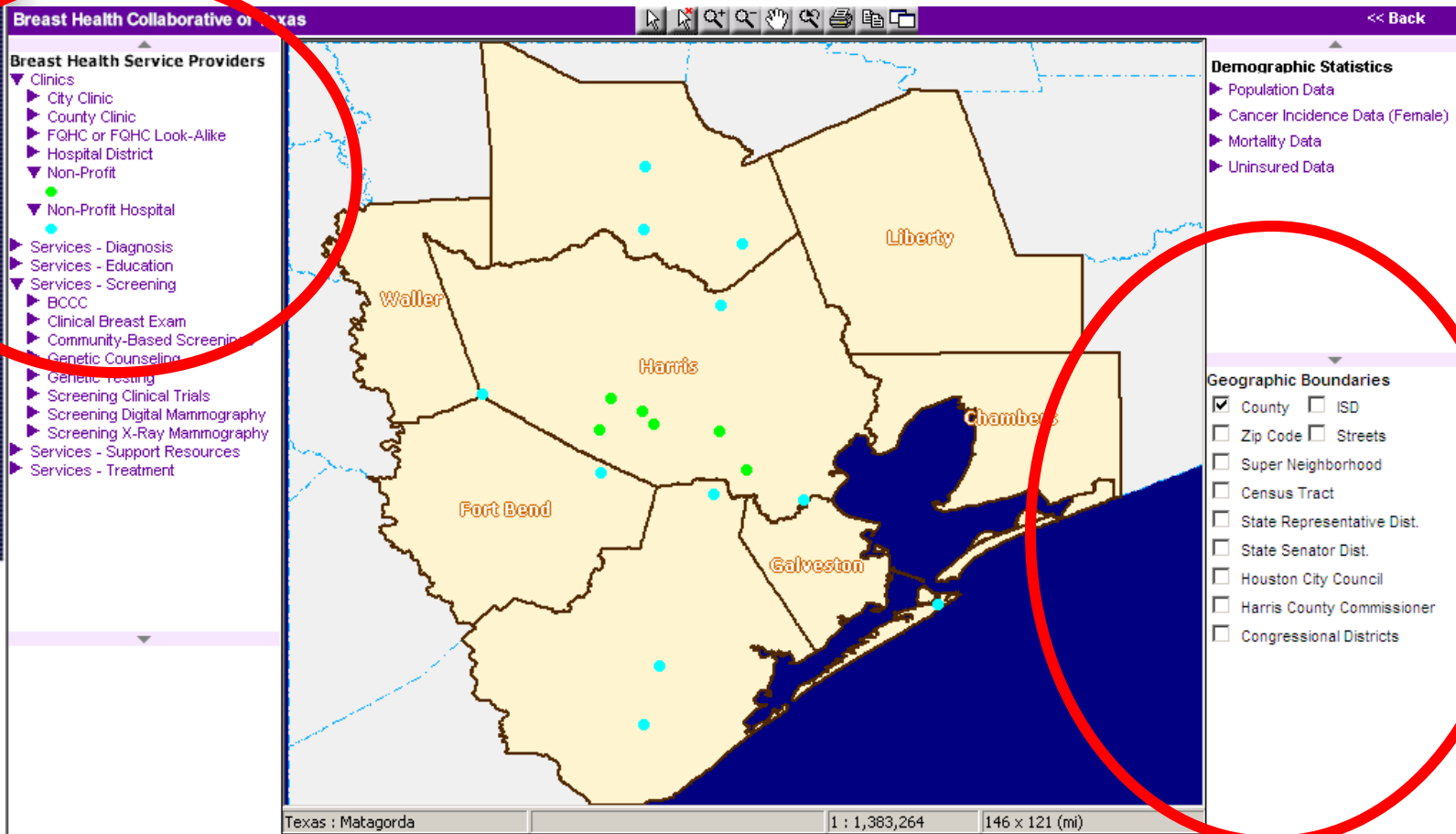
Area Served:

Select All...
Anderson
Andrews
Angelina
Aransas
Archer
Armstrong
Atascosa



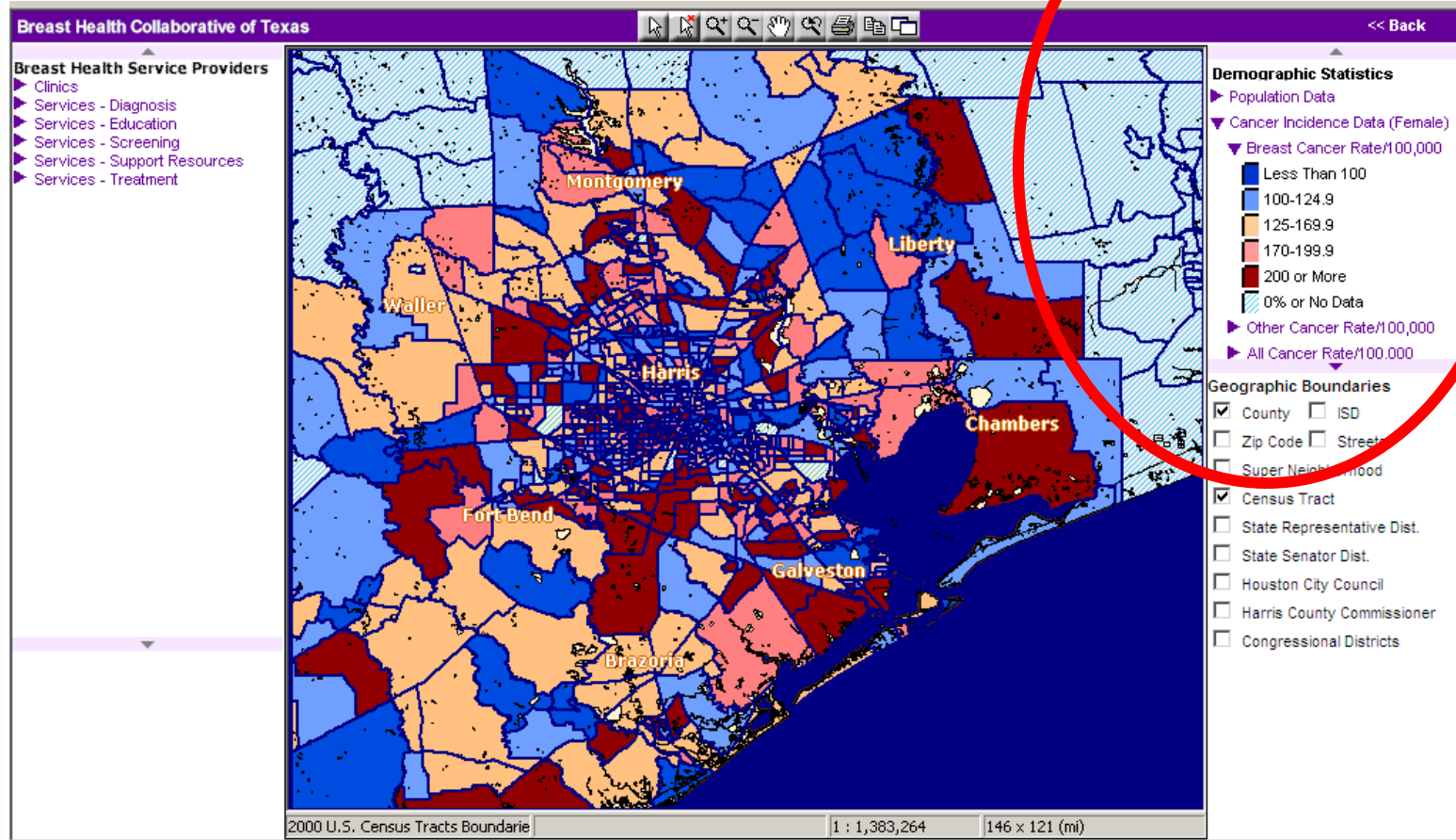
ST. LUKE'S®
EPISCOPAL
HEALTH
CHARITIES

Breast Health Portal



ST. LUKE'S®
EPISCOPAL
HEALTH
CHARITIES

Breast Health Portal



Breast Health Portal

- Invitation to join
- Addition of data
 - Incidence histograms
 - Map of incidence in 40-64 age group
 - Hot spots
- Conversion to Google platform



Data Working Group of the Breast Health Collaborative

- Formed in 2009
- **Purpose** – Review, analysis and mapping of Texas Cancer Registry Data with a focus on **ethnicity, age, stage and diagnosis.**
- **Members:** Harris County Hospital District, Susan B. Komen for the Cure, M.D. Anderson Cancer Center, St. Luke's Episcopal Health Charities, The Rose, UT School of Public Health
- **Vision:** Elimination of health disparities with a particular focus on the disparity between incidence and mortality



Summary of Analysis Findings

- Highest incidence in Caucasian women in 40-64 age group
- Large proportion of uninsured women aged 40-64
- Not enough mammograms being performed at free/low cost
- Even if mammogram providers performed at full capacity, it would not serve the entire need



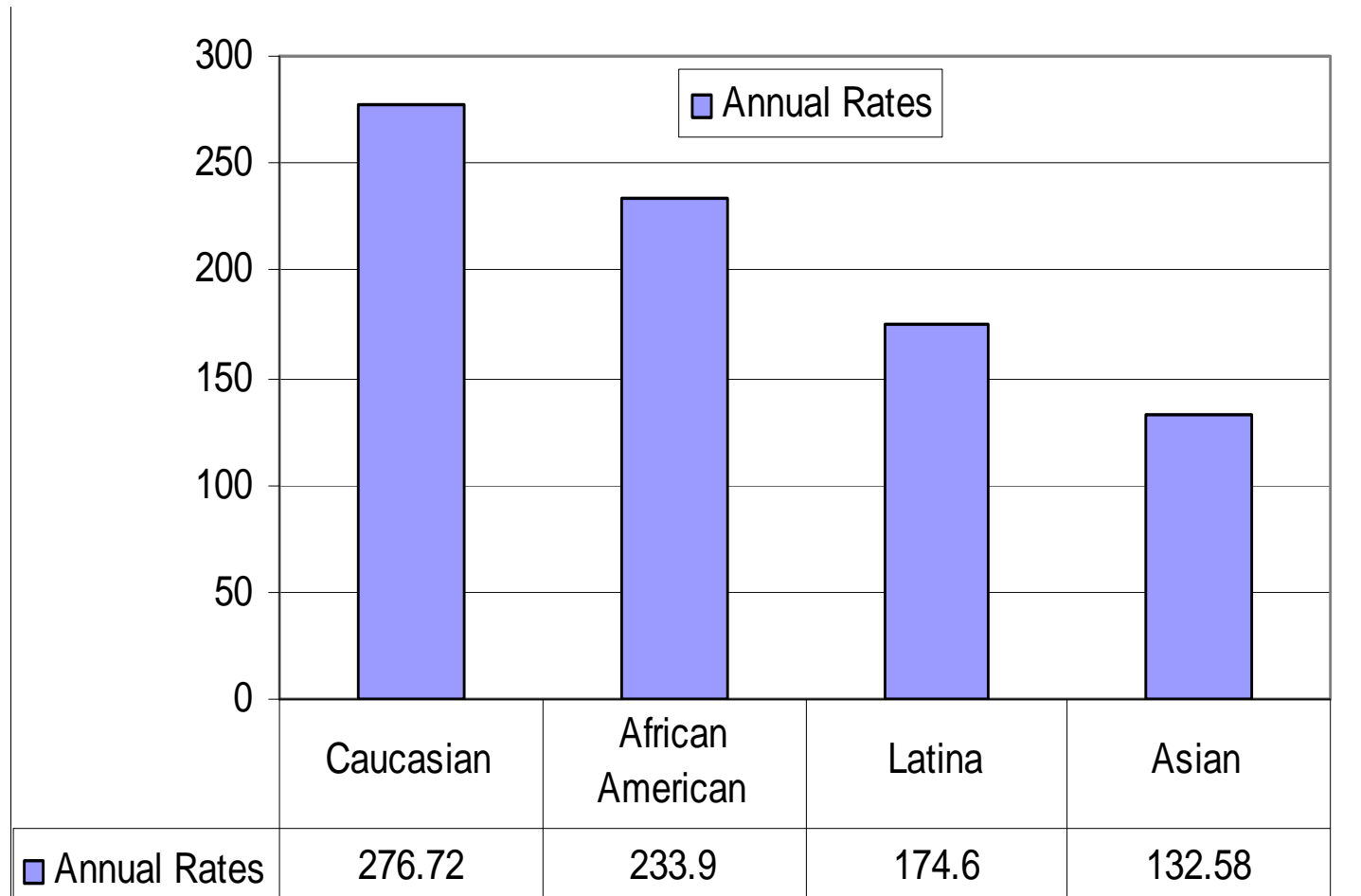
Breast Cancer Incidence

- Incidence is defined as “the number of new cases in a population for a given period of time”
- Cumulative incidence is defined as “the number of new cases/ population at risk for a given period of time”



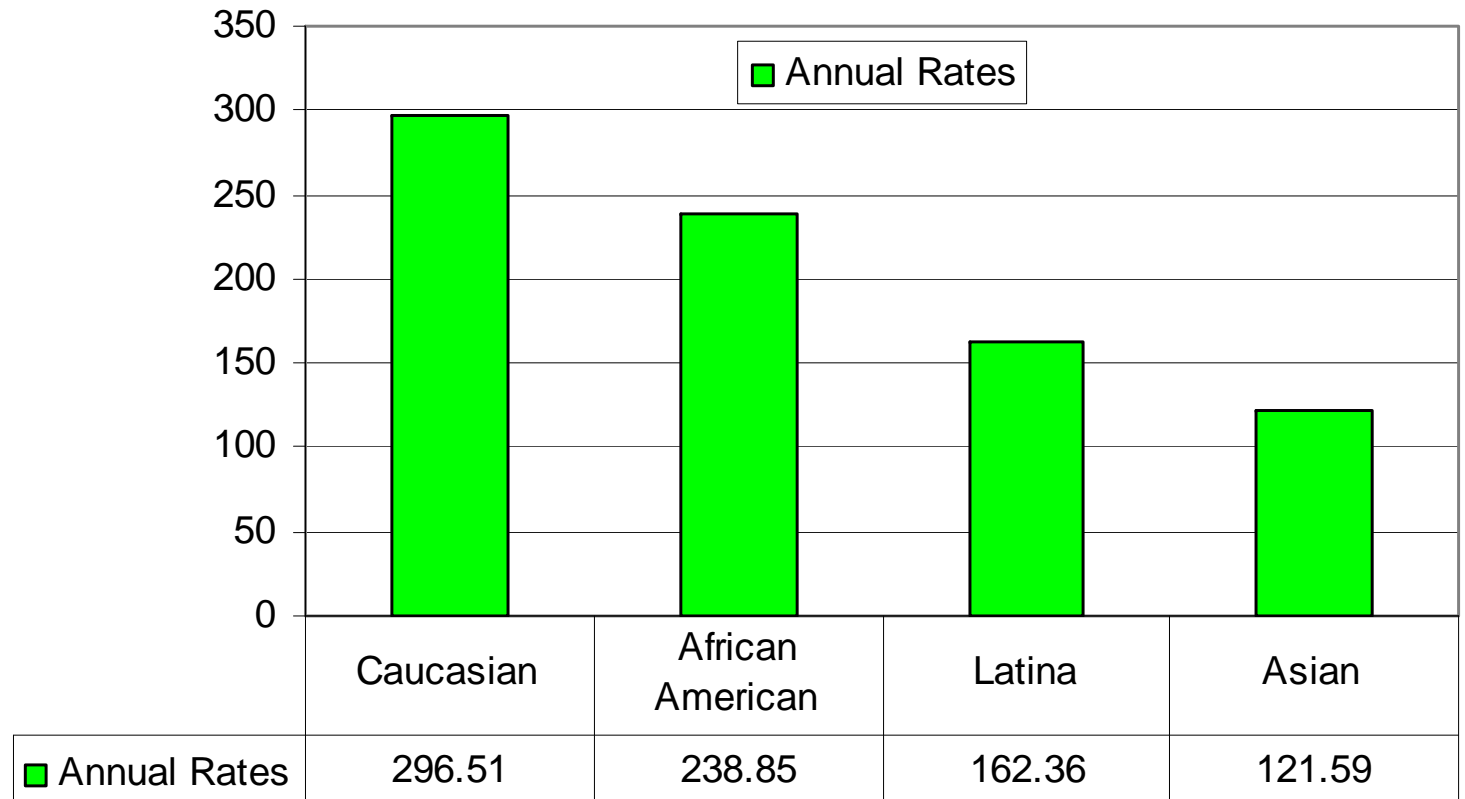
Annual Female Breast Cancer Incidence Rates (Texas)

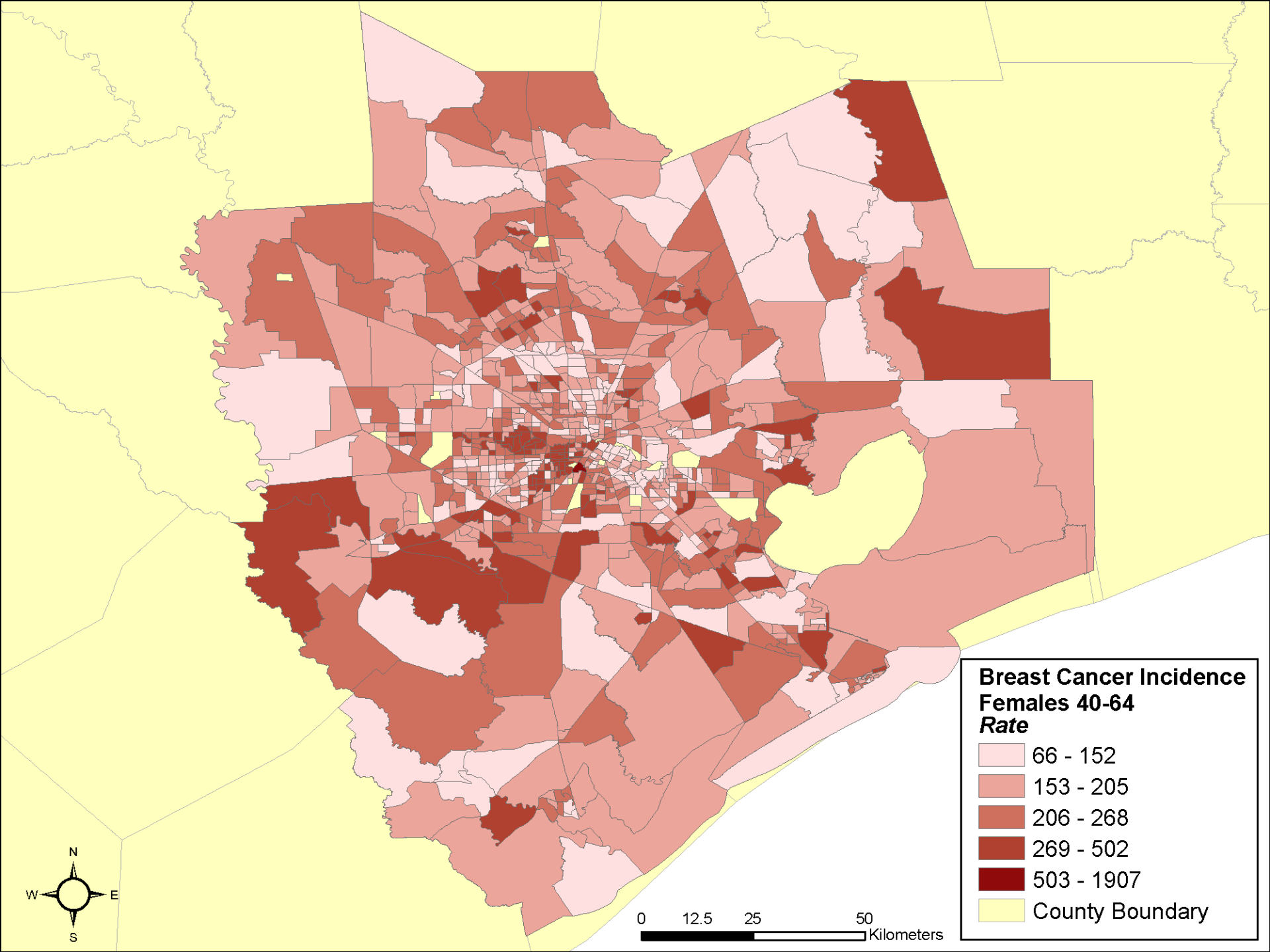
(Per 100,000 Female, Race-Stratified, Aged 40-64 years old ONLY)

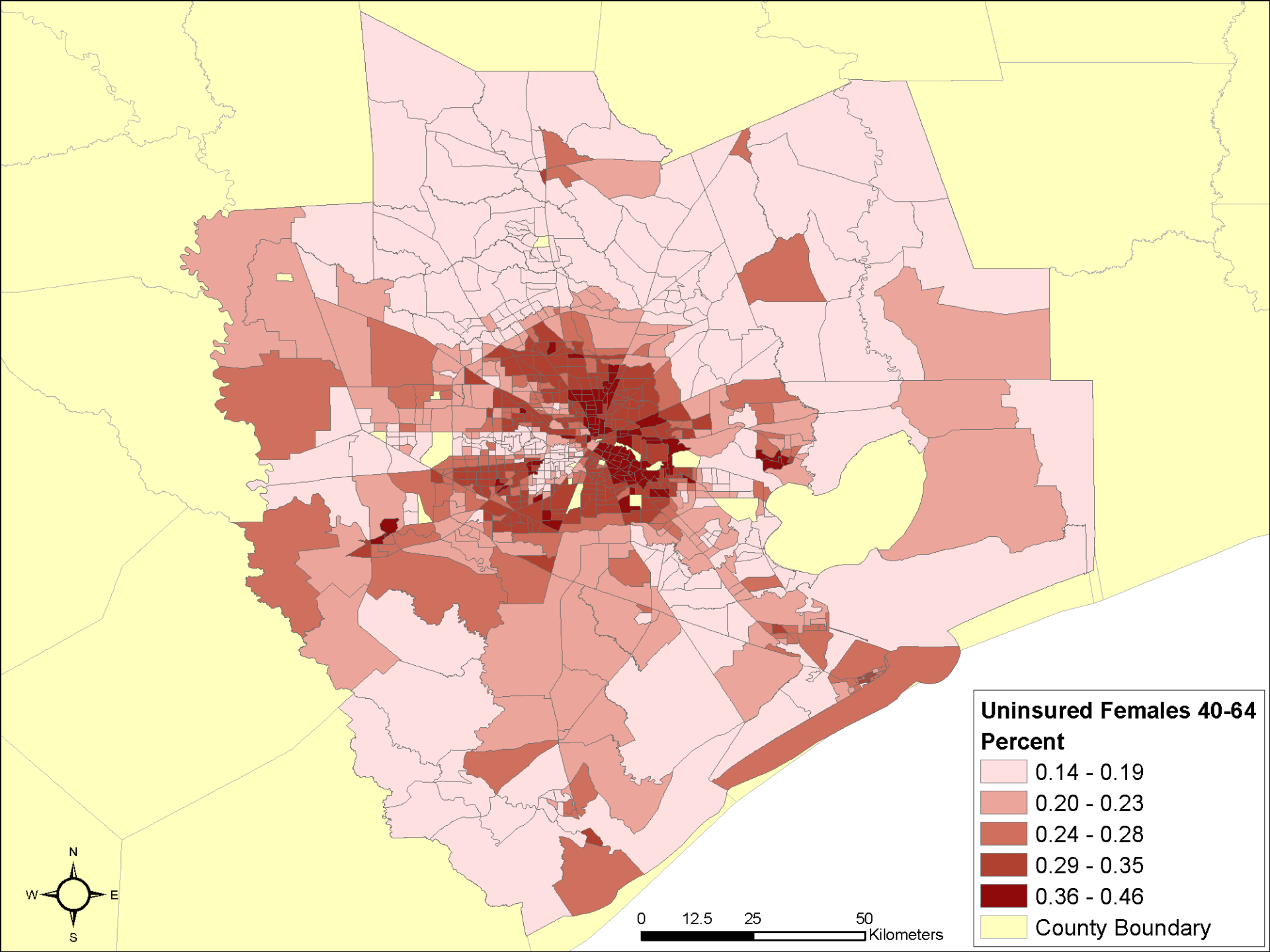


Annual Female Breast Cancer Incidence Rates (8 County)

(Per 100,000 Female, Race-Stratified, Aged 40-64 years old ONLY)





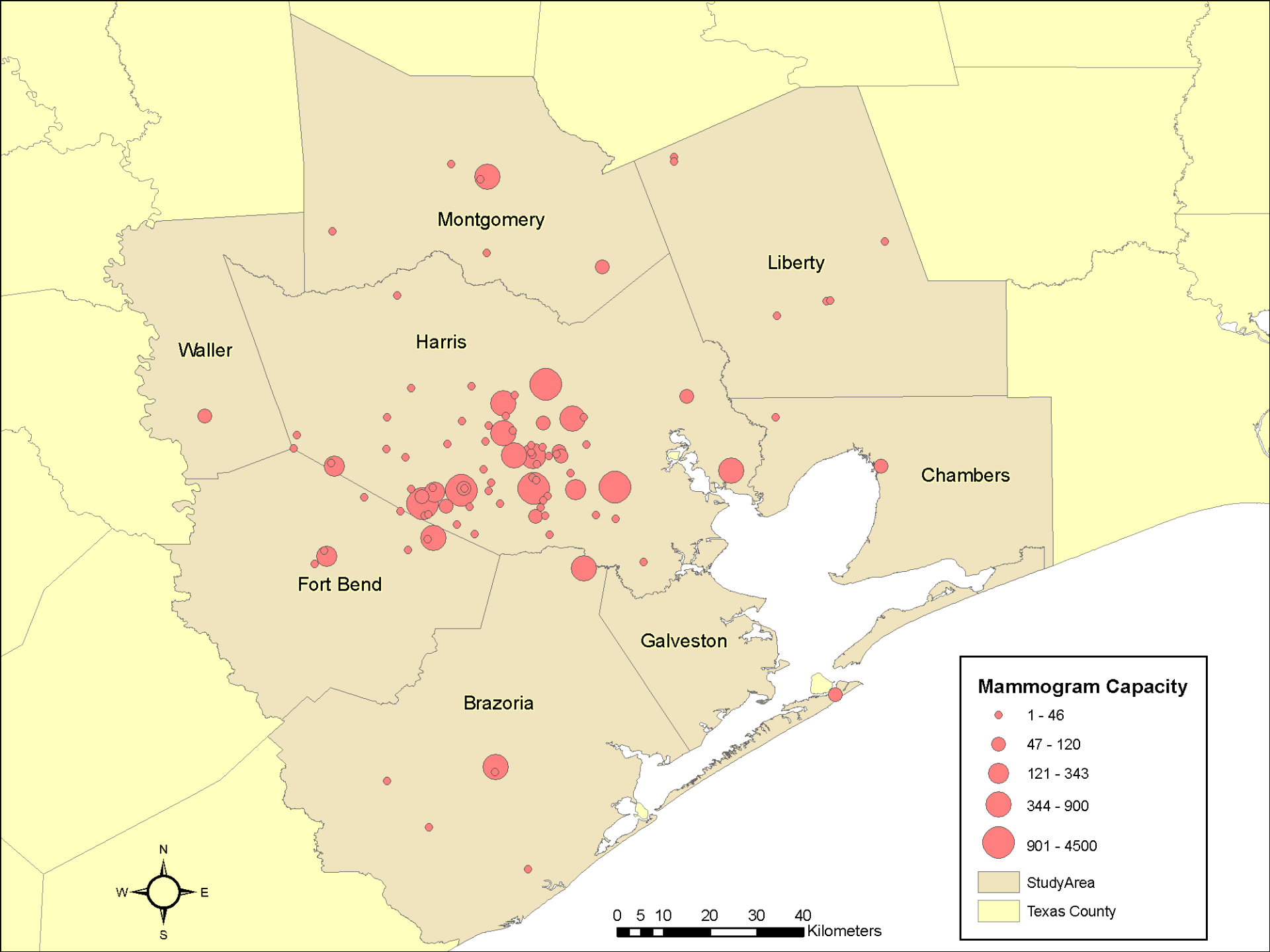


Mammogram Capacity

- Mammogram site(s) and capacity information was collected for CMSA for *free/low cost* mammograms.
- 101 locations were geocoded
 - Fixed and mobile

Number Mammograms Performed 2008	Number of Mammograms Offered (capacity)	Estimated Number Eligible Uninsured Females	Estimated Unmet Need
25,462	29,015	210,492	185,030 (88%)





Summary

- Highest Incidence in Caucasian women in 40-64 age group
- Large proportion of uninsured women aged 40-64
- Mammogram capacity is much lower than estimated need



Next Steps

- Spatial exploratory data analysis
 - Breast cancer incidence and uninsured/mammograms
 - Uninsured and mammograms performed
- Analysis of mortality data
- Trends over time
- Extension of the BHP to more providers/larger geographic areas



Acknowledgements

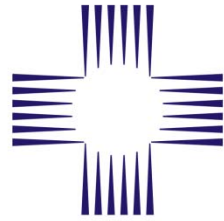
- **Breast Health Collaborative Data Working Group**

- Heather Shirk Patrick
- June Hanke
- Celene Meyer
- Jeanne S. Hanks
- Kimberly K. Lopez
- Jane Peranteau
- Ning Zhang
- Fiona Adams

Thomas F. Reynolds
Dr. Gail Bray
Dorothy Gibbons
Ginny Thompson
Krystal R. Sexton
Margo A Hilliard
Loretta A Hanser
Charles E. Begley

Data providers for Mammograms





ST. LUKE'S®
EPISCOPAL
HEALTH
CHARITIES



Closing the Gap:
Capacity and Incident Data Analysis
Linda Highfield, PhD
Manager, Community Health Information System (CHIS)